

No Harm on the Farm

A Safety Adventure

Who is the angry animal on the map? _____

Which mother animal is protecting her baby on the map? _____

If there is an emergency, what number should you call? _____

If your clothes catch on fire, what are the three steps you need to take?

1 _____ 2 _____ 3 _____

Match the ways chemicals can harm you:

Inhalation

Swallowed

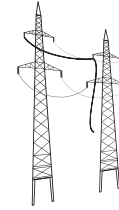
Ingestion

Soaks into your skin or eyes

Absorption

Breathed in

Can you name these four hazards?



Can you find the words in the word search?

D A N G E R L E E X L C
 Z H F R L O Z G O H A H
 K L A W E H A Z A R D E
 Z J R F C N R V I H D M
 O E M N T R N P D U E I
 T E M E R G E N C Y R C
 R B I Z I Z S H H Q V A
 A G W K C O I A H V L L
 C H F R I V L W F M D S
 T E A I T R O R W E G V
 O R I D Y F I R E R T H
 R A N I M A L S K Y X Y

Hazard

Tractor

Electricity

Ladder

Silo

Fire

Animals

Emergency

Chemicals

Safety

Danger

Farm



FUN FACT!

24 first graders weigh as much as one cow.



GET THE LYRICS

teamtandj.com/farm-safety



HAZARDS

No Harm
on the Farm
A Safety Adventure

START

STOP

FIRE

CHEMICALS

FINISH

ANIMALS

MACHINES